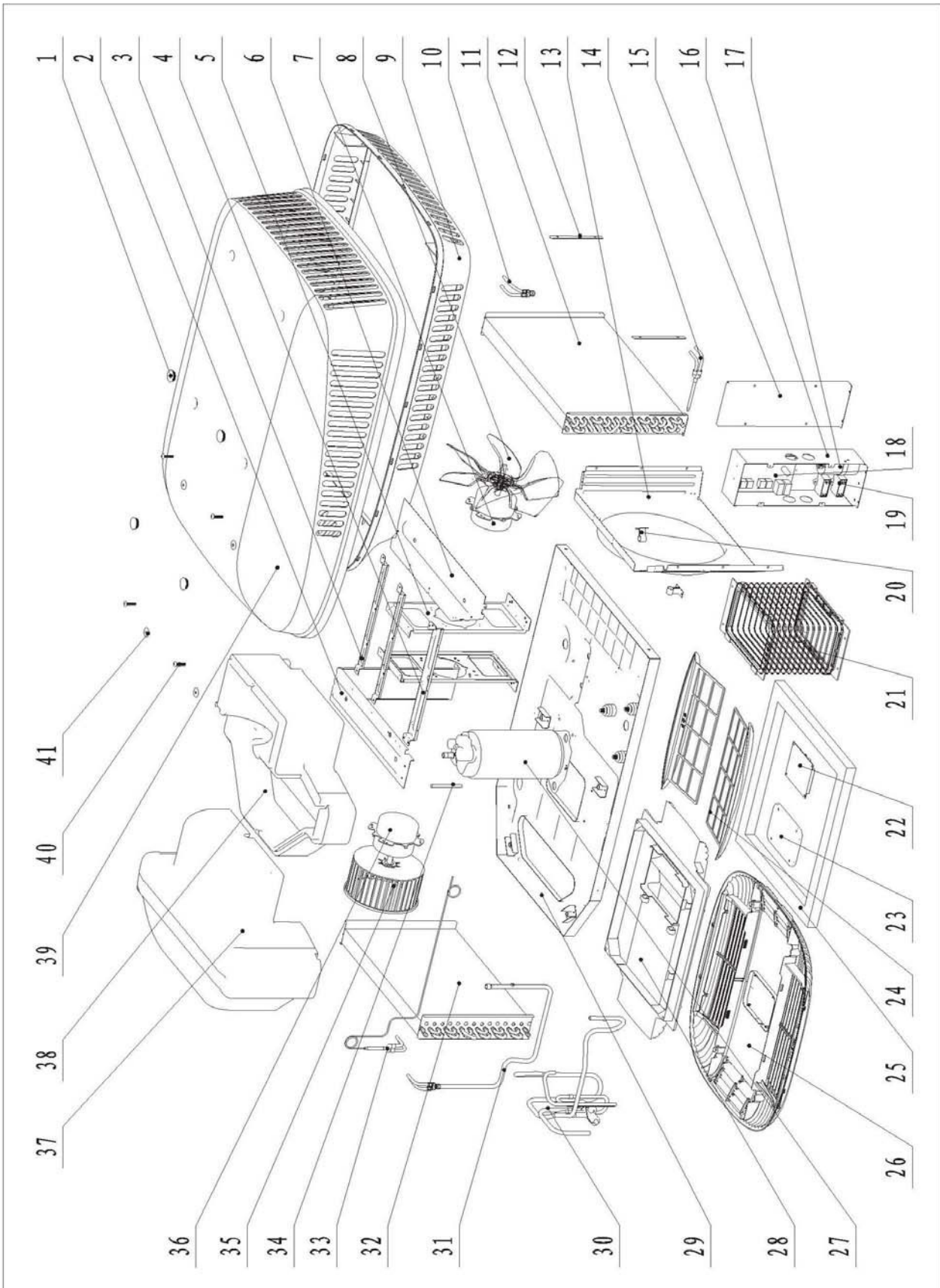


# Exploded Diagram and Parts List



No.	Figure No.	Name	Qty
1	7330-1000-21	Screw cap	4
2	7330-1000-02	Spiral case	1
3	7330-1000-10	Motor mounting plate	2
4	7330-1000-09	Compressor mounting plate	1
5	7330-1020-01	Motor bracket	2
6	7330-1000-07	Condensation cover	1
7	7270-1020-02	Outdoor motor	240V
	7280-1020-02	Outdoor motor	115V
8	7270-1000-06	Axial flow fan	1
9	7330-1080-02	Base	1
10	7330-1522-00	Condenser in tube assembly	1
11	7330-1521-00	Condenser assembly	1
12	7330-1080-09	lining board	2
13	7330-1070-01	Fan ring	1
14	7330-1523-00	Condenser out tube assembly	1
15	7330-1000-11	Control box cover	1
16	7330-1700-01	Control box	1
17	TDQ-04205	Compressor Capacitor	240V
	7280-1700-03ZH2	Compressor Capacitor	115V
18	7330-1700-08	Main board	240V
	7370-1700-08	Main board	115V
19	TDQ-04106	Fan capacitor	240V
	7280-1700-04	Fan capacitor	115V
20	7270-1000-17	Pipe clamp	2
21	7339-1000-02	Air duct interface	1
	7339-1000-03	Block	8
	7339-1000-05	Air duct	1
	7339-1000-09	Square duct ring	1

No.	Figure No.	Name	Qty
22	7339-1700-01	Display receiving board	1
23	7339-1010-07	Display mounting cover	1
24	7339-1010-06	Filter	2
25	7270-0000-08	Outlet gasket	1
26	7339-1010-01	Plenum assembly	1
27	7270-1000-01ZH1	Compressor	T3500
	7300-1000-01ZH2	Compressor	T150
	7280-1000-01ZH2	Compressor	T135C
28	7339-1000-01	Plenum mounting bracket	1
29	7330-1010-00	Chassis base	1
30	7330-1500-00	Four way valve assembly	240V
	7370-1500-00	Four way valve assembly	115V
31	7330-1512-00	Evaporator out tube assembly	1
32	7330-1511-00	Evaporator assembly	1
33	7330-1513-00	Evaporator in tube assembly	1
34	7280-1000-08ZH1	Compressor locating rod	1
35	7330-1000-05	Centrifugal fan	1
36	7330-1030-02	Indoor motor	240V
	7340-1030-02	Indoor motor	115V
37	7330-1050-02	Upper foam	1
38	7330-1060-03	Lower foam	1
39	7330-1080-01	Canopy	1
40	18-10-60	Pan bolt	4
41	18-33-18	Large washer	4